

JAPAN
quality

Global environment-friendly heat-shield coating

Adgreencoat® GP series

Adgreencoat®

Global environment-friendly heat-shield coating Adgreencoat® GP

省エネルギー技術の提供で地球環境に貢献します。

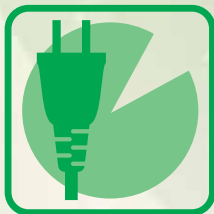
Contributing to the global environment
through furnishing energy-saving technology



環境対策 Eco-Friendly

水系でVOC成分及び臭気が少なく、環境にやさしい塗料です。
シンガポール・エコプロダクツで、継続的に環境貢献する塗料として、
シルバーアワード賞受賞しました。

Adgreencoat is the “water-based plus eco-friendly (less VOC / stink)” paint.
We won the silver award of “the sustainable eco-friendly paint”
at the Eco Products 2006 in Singapore.



節電対策 Saving Energy

特殊セラミックスの機能性(wブラインド効果)で絶大な遮熱効果を発揮します。
過大な空調負荷を削減し、即効性ある節電が可能です。

It has superb heat shield effect with the distinctive functionality of
special ceramic materials. It is possible to reduce the excessive air-
conditioning load and power saving with immediate effect.



躯体保護 Substrate Protection

熱劣化を低減し、躯体保護に大きく寄与します。
平滑性ある塗膜は薄膜で防汚力に優れ、長期に渡り遮熱効果を発揮します。

Thin and smooth surface and keep beautiful appearance the heat shield
effect will remain longer by reducing the thermal degradation.



高品質・高機能生(国際特許製品)

High quality / functionality(International patent product)

Mechanism

Cool down at the Nano-ceramics combination

太陽光・反射・・ナノセラミックの機能性

Solar Light Reflection: Nano-ceramics functionality

0.2~0.6 μ mのナノサイズが近赤外線の波長と同調し、電磁波散乱による高反射で温度上昇を抑制します。

From 0.2 to 0.6 μ m nano-size ceramics are syntonetic with the wavelength of near-infrared, and reduce temperature of substrate by electromagnetic wave scattering.

太陽熱・放射・・特殊形状による機能性

Solar Heat Release: Specific shaped functionality

アモルファス形状により「高熱伝導」で瞬時に熱を排熱し「熱だまり」を解消します。

The amorphous shaped ceramics has high thermal conductivity, which is effectively release heat and reduce the heat bank.

優位性

The strength and superiority

優れた施工性

Excellence in constructing work.

薄膜で施工性に優れ、短納期で遮熱対策が可能です。

It will be possible;

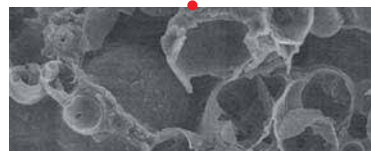
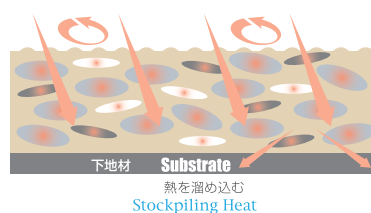
- 1) Thin coating and perfect effect,
- 2) Short period delivery with heat measurement.

美しい仕上がり

Beautiful coating surface.

平滑性ある塗膜は美観性・防汚性に優れています。

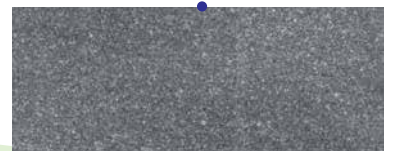
Very smooth coating film makes beautiful appearance and great for anti-dirt.



中空バルーンセラミック
Hollow balloon ceramics



厚いコーティング + ざらつき
Thick coating and rough surface



特殊セラミック
Special ceramics



薄い+ 滑らかな表面
Thin and smooth surface



様々な所に塗装されています。
Contributes at various place for heat shielding.

Ski Dubai

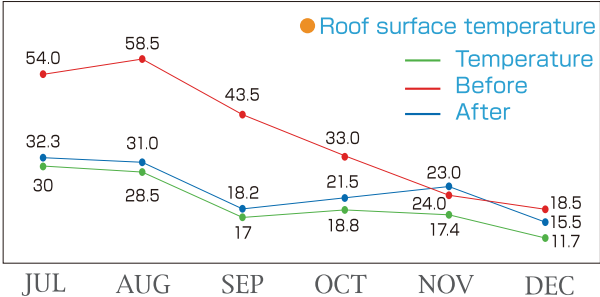
Inside Temp. reduction **6℃**



Factory

Place: Okayama in Japan, house maker factory
Measurement period in Japan: From July, 2012 to December
Roof: Galvalume (27,000 square meters)

Result	Roof surface temperature	Inside temperature
Temperature	28.5℃	28.6℃
Before	58.5℃	37.5℃
After	31.0℃	33.5℃
Difference	▲27.5℃	▲4.0℃



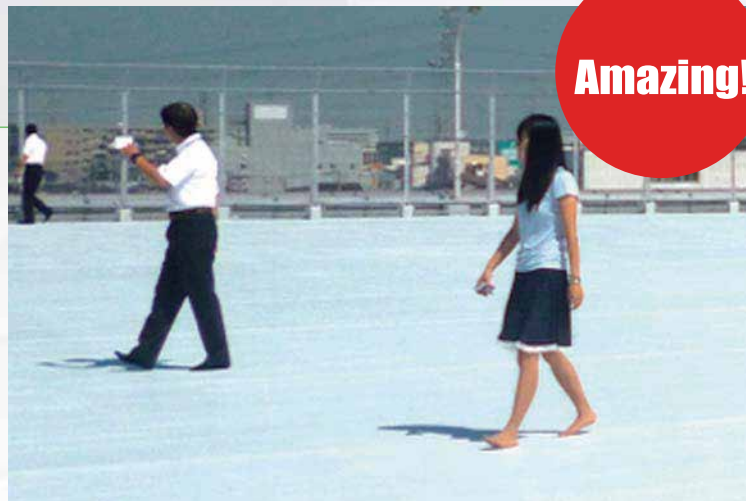
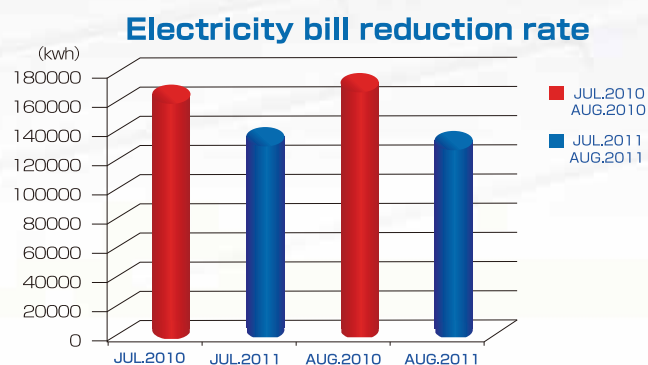
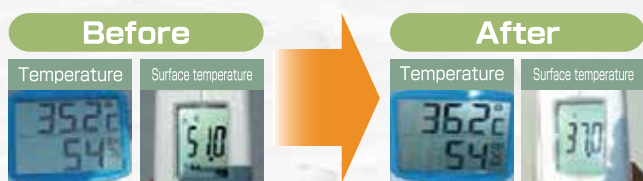
at[®] School

体育館室内温度を5℃抑制
5 degrees temperature restraint for
inside of school gymnasium



Energy
30% OFF

Supermarket



Amazing!

It is comfortable on bare feet.

Place: Saitama in Japan. : Supermarket
Measurement period in Japan: From
11-July, 2011 (11:00am)
Roof: Galvalume (2,000 square meters)

Warehouse

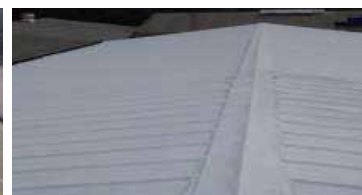
Place: Jakarta , Warehouse
Roof Material : Zinc Aluminium
Roof: Galvalume (307square meters)

Conclusion

Adgreencoat is proven to reduce the surface's temperature of the roof.



Before Coating



After Coating

Condition	Before	After	Difference
Roof Temperature	79.0℃	52.5℃	▲26.5℃

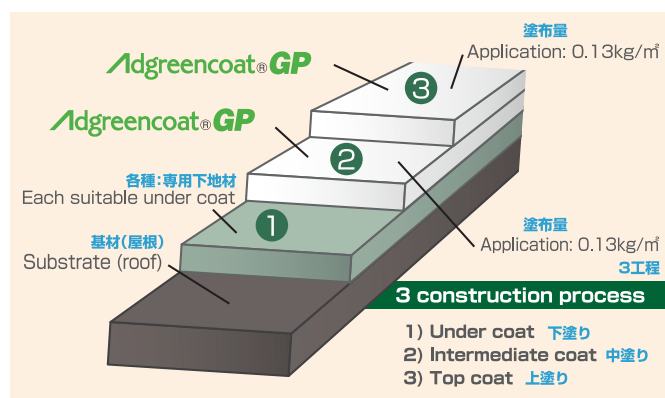
• Data taken from the highest temperature recorded from each charts.



Product information

for more information visit :
<http://www.nck-gp.com>

“Stay cool, save energy”



Adgreencoat® GP

Recommended use

Final coating materials for roof, walls. Steel, Galvalume iron, etc. Concrete, Mortar, Roofing slate, ALC, etc.

Apply substrate materials depending on the kind of a roof and the wall, and, please use it as finalcoating materials.

FEATURES

- Excellent Highly Reflective Heat Shield Paint.
- Quick dry.
- Good adhesion property.
- Low odour.
- Excellent Workability.
- Good alkaline resistance.



Contents 内容	Adgreencoat® GP Top coat 主 材	ACLOSE Under coat 下地材	Miyabi Under coat 下地材
Type 種 類	Water-based 水 系	Water-based 水 系	Solvent 溶 剤
Packing 荷 姿	13kg/can(10ℓ)	13kg/can(10ℓ)	13kg/can(9.4ℓ)
Mixing ratio 混合比	One solution 1 液	One solution 1 液	4 : 1 Base Har dner
Application Condition 塗布量	0.13kg /m²/coat (10m²/ℓ/coat)	0.10kg /m²/coat (13m²/ℓ/coat)	0.13kg /m²/coat (10.6m²/ℓ/coat)
Recommended DFT 推奨膜厚(ドライ)	40μm/coat	30μm/coat	50~70μm/coat
Application method 塗装方法	Brush, Roller Spray 0~5% 5~10%	Brush, Roller Spray 0~10% 10~20%	Airless Spray 3~10(wt.%)
Dilution ratio 希釈率	(Drinking water)	(Drinking water)	(Miyabi Thinner B)
Coating Interval 塗装間隔	Temperature 20℃	Temperature 20℃	Temperature 20℃
	Minimum 2h	Minimum 2h	Minimum 24h
	Maximum 7days	Maximum 7days	Maximum 7days
Drying Time 乾燥時間	Temperature 20℃	Temperature 20℃	Temperature 20℃
	Surface Dry 1h	Surface Dry 30min	Surface Dry 2h
	Hard Dry 2h	Hard Dry 2h	Hard Dry 12h

Nonmetal

ACLOSE Sealer for Adgreencoat® GP

Recommended use

External and internal new concrete, mortar. Cement render, brickwork, hard and soft board, Plaster, ceiling and slate tile etc.

Metal

Miyabi Primer for Adgreencoat® GP

Recommended use

Anti-corrosive and tank lining primer in severe corrosive environments found in petrochemical, gas, power, fertilizer plants as well as refineries, tank, bridges and marine constructions.



・標準塗布量の数値は使用量の標準値です。個々の条件によって異なる場合があります。
 The Value of the standard application amount is the standard value of usage.
 It may vary depending on the conditions of the individual.

・下地材は各種素地に合わせた専用下地材をご使用下さい。
 Please use the dedicated under coat to suit a variety of each substrate material.

・塗料の取扱いについての一般的な注意事項は「取扱い説明書」及びSDS「安全データシート」を参照下さい。
 Please refer to the “Instruction Manual” and “Safety Data Sheet (SDS)” for the general guidelines for the paint handling.



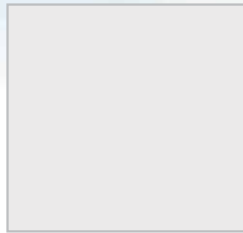
10 Colours Lineup



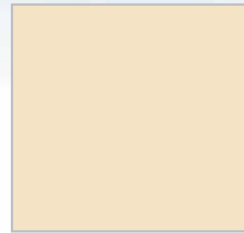
GP-008
ローズホワイト
Rose white



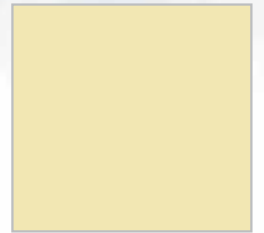
GP-009
ホワイト
White



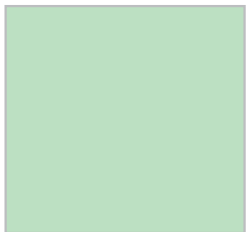
GP-100
パールグレー
Pearl gray



GP-200
アイボリー
Ivory



GP-201
クリーム
Cream



GP-300
ミントグリーン
Mint green



GP-305
アップルグリーン
Apple green



GP-400
スカイブルー
Sky blue



GP-500
ブラウン
Brown



GP-600
ローズ
Rose

*この色見本は印刷インキの都合上、実際の仕上がりとは異なります。

*他の色はお問い合わせ下さい。

*These colourings are different from the real finish on account of the printing ink.

*Please inquire for other colors.

Let's think about what we can do for future children.

未来の子供たちの為に、
我々ができることを



総合評価NO.1

Overall Evaluation: No.1

機能性・環境生 Functionality and Environmental Measures

世界最高峰の特殊ナノセラミックを用いて開発されたアドグリーンコートは、公的機関に於いても高い機能性が実証されており、環境塗料として様々な実証・認定を受けています。

Developed using the world's best special nano-ceramics, Adgreencoat has demonstrated high-functionality even in the public sector and has been proven and certified as an environmental paint by various institutions.

美観性・耐久性 Aesthetics and Durability

厚塗り塗料からの脱却。平滑性ある美しい仕上がりは美観・防汚力・耐久性に優れています。

Break away from thick coating. The beautiful finish is aesthetically beautiful, has antifouling properties and durability.

価格の優位性 Price Advantage

材料使用量を他社比較1/2以下、施工性の良さでハイコストパフォーマンスを実現！

Compared to other companies, the material usage is less than half, realising a high-cost performance with excellent workability.



■アドグリーンコート®の海外戦略 Overseas sales network of the Adgreencoat®



Singapore / NCK GLOBAL PAINT PTE LTD. < <http://www.nck-gp.com> >
20 Collyer Quay #23-01 Singapore 049319



China / Adgreen (CHANGSHU) CO.,LTD. < <http://adgreen.com.cn/> >
Rm1904 Bldg. 1 Tongji Science and Technology Square, No.333 Hushun Road,
Changshu Southeast Economic Development Zone of Jiangsu, Changshu, Jiangsu 215500 CHINA



Japan / Nihon Chuo Kenkyujo Co.,Ltd. < <http://www.nck-inc.com> >
NCK Sales Co.,Ltd. <<http://www.nck-sales.co.jp>>
Sigma Bldg.3-7-12, Shibaura Minatoku, Tokyo 108-0023, Japan



Taiwan / NCK INTERNATIONAL 中研國際股份有限公司
臺中市北屯區崇德路二段26號4樓